



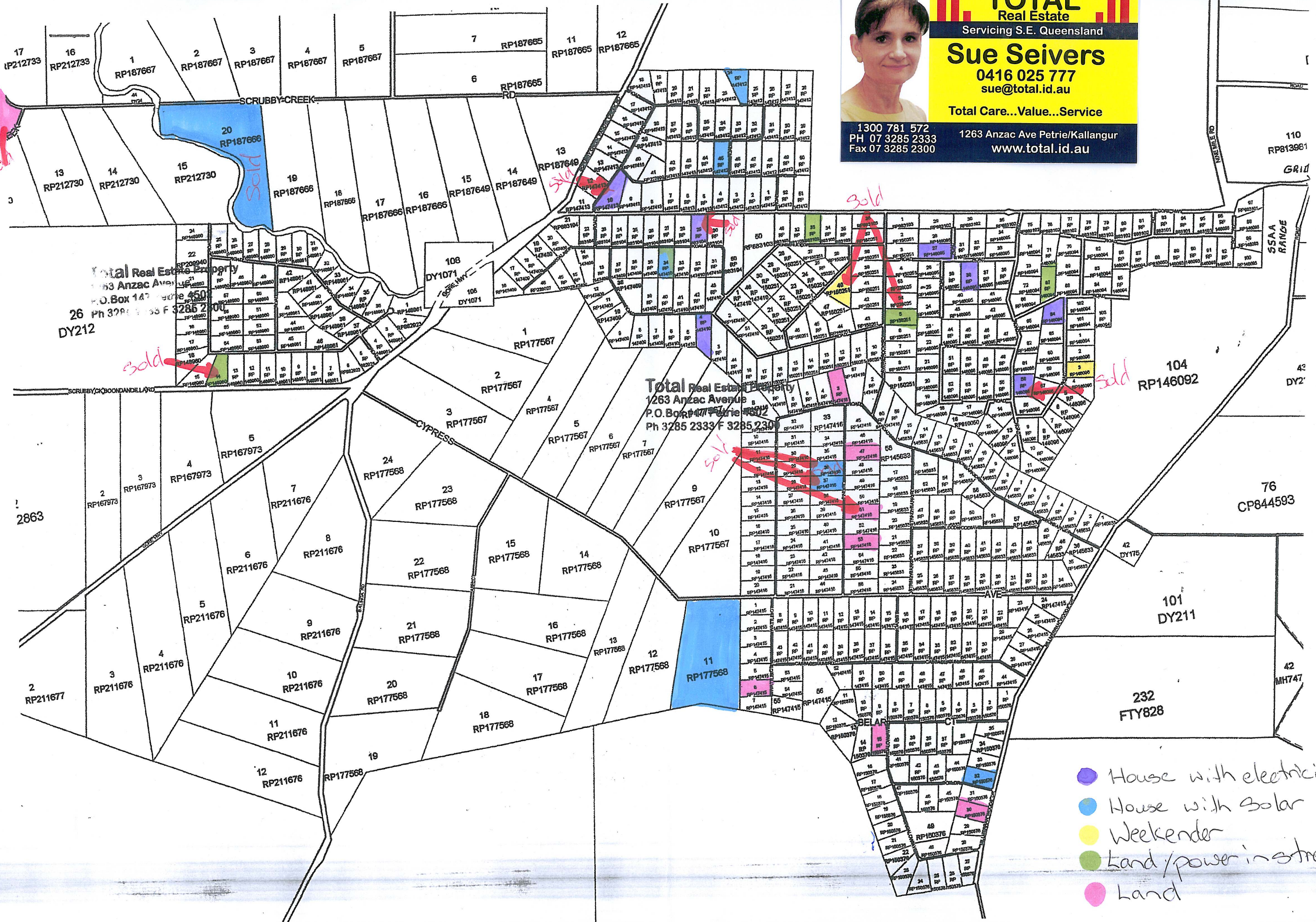
**TOTAL**  
Real Estate  
Servicing S.E. Queensland

**Sue Seivers**  
0416 025 777  
sue@total.id.au

Total Care...Value...Service

1300 781 572  
PH 07 3285 2333  
Fax 07 3285 2300

1263 Anzac Ave Petrie/Kallangur  
www.total.id.au



- House with electricity
- House with Solar
- Weekender
- Land / power in street
- Land

Total Real Estate Property  
1263 Anzac Ave  
P.O. Box 147 Petrie 450  
26 Ph 3285 2333 F 3285 2300  
DY212

Total Real Estate Property  
1263 Anzac Avenue  
P.O. Box 147 Petrie 450  
Ph 3285 2333 F 3285 2300

232  
FTY828

101  
DY211

104  
RP146092

76  
CP844593

42  
MH747

42  
DY175

42  
DY2

GRID

110  
RP813981

ROAD

